



West Wales Marine /
Gorllewin Cymru Forol

Tudalen Page **1 / 4** Côd Safle y GE EC Site Code

-  Ardal Cadwraeth Arbennig dan ystyriaeth (ACAy)
Possible Special Area of Conservation (pSAC)
-  Ardaoedd Cadwraeth Arbennig Eraill (ACA)
Other Special Areas of Conservation (SAC)

Arwynebedd cyfan **737,717.38 ha** G/N
Total area
 Hydred **-4.8886 dec deg**
Longitude
 Lledred **53.5684 dec deg**
Latitude



N.G. Mae'r ffigurau Lledred/Hydred i gyd wedi deillio o System Geodesig y Byd 84 (WGS 84)
N.B. All Latitude/Longitude figures have been derived from World Geodetic System 84 (WGS 84).

Taftuniad map: Y Grid Cenedlaethol Prydeinig
Projection: British National Grid

Rhif diweddaraf **1** 14/01/2016
Version number

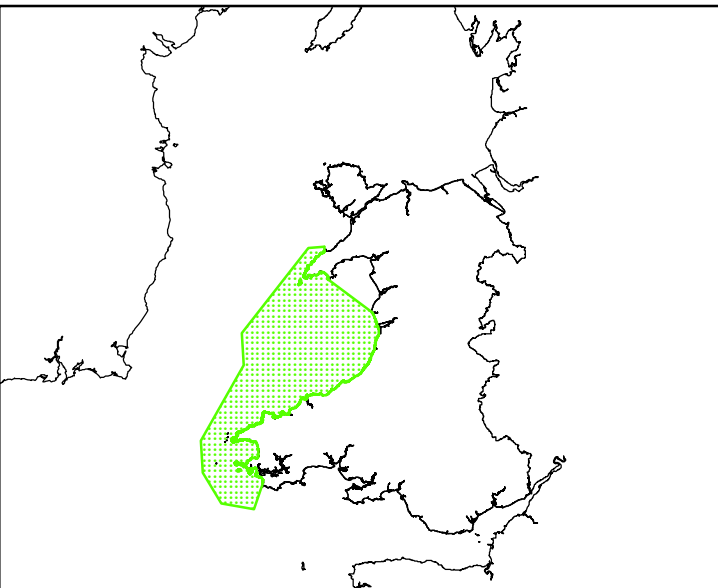
Graddfa / Scale **1:600,000**


Noder: Data wedi ei gipio ar raddfa 1:2,500, rhoddwyd ar raddfa 1:600,000. Mae mapiau graddfa-fawr swyddodol ar gael gan CNC. Mae graddfa'r map yn cywir pan argraffu yn A3.
Note: Data captured at 1:2500 scale, placed on 1:600,000 scale. A definitive large scale map is available on request from NRW. The scale of this map is only correct when printed out at A3.

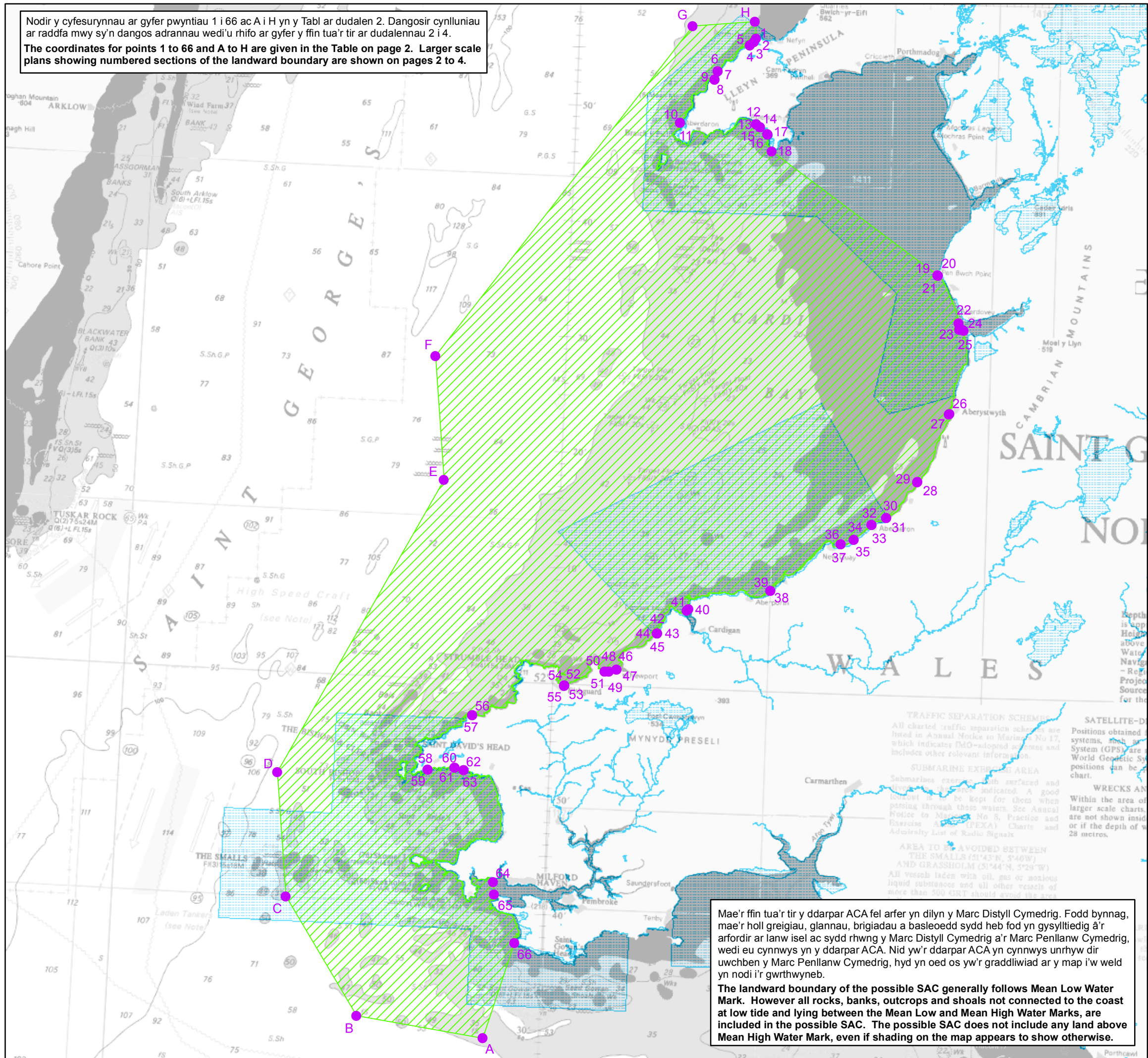
Noder: Gall y ffin newid lle mae'n dilyn llinell Marc Penllanw Cymedrig ac/neu llinell Marc Distyll Cymedrig.

Note: Where the boundary follows the lines of Mean High and/or Mean Low Water Marks it is subject to change.

© Hawlfraint y Goron a hawliau cronfa ddata. 2015. Arolwg Ordnans. 100019741
 © Crown Copyright and database rights. 2015. Ordnance Survey. 100019741
 © British Crown and OceanWise Ltd, 2015. Cedwir pob hawl. Rhif Trwydded. EK001-20120402.
 © British Crown and OceanWise Ltd, 2015. All rights reserved. License No. EK001-20120402.
 RHAID PEIDIO Â DEFNYDDIO HWN AR GYFER LLYWIO NOT TO BE USED FOR NAVIGATION



Nodir y cyfesurynnau ar gyfer pwyntiau 1 i 66 ac A i H yn y Tabl ar dudalen 2. Dangosir cynlluniau ar raddfa mwy sy'n dangos adrannau wedi'u rhifo ar gyfer y ffin tua'r tir ar dudalennau 2 i 4.
The coordinates for points 1 to 66 and A to H are given in the Table on page 2. Larger scale plans showing numbered sections of the landward boundary are shown on pages 2 to 4.



Mae'r ffin tua'r tir y ddarpar ACA fel arfer yn dilyn y Marc Distyll Cymedrig. Fodd bynnag, mae'r holl greigiau, glannau, brigadau a basleoedd sydd heb fod yn gysylltiedig â'r arfordir ar lanw isel ac sydd rhwng y Marc Distyll Cymedrig a'r Marc Penllanw Cymedrig, wedi eu cynnwys yn y ddarpar ACA. Nid yw'r ddarpar ACA yn cynnwys unrhyw dir uwchben y Marc Penllanw Cymedrig, hyd yn oed os yw'r graddliwiad ar y map i'w weld yn nodi i'r gwrthwyneb.
The landward boundary of the possible SAC generally follows Mean Low Water Mark. However all rocks, banks, outcrops and shoals not connected to the coast at low tide and lying between the Mean Low and Mean High Water Marks, are included in the possible SAC. The possible SAC does not include any land above Mean High Water Mark, even if shading on the map appears to show otherwise.

West Wales Marine / Gorllewin Cymru Forol



Ardal Cadwraeth Arbennig dan ystyriaeth (AGAy)
possible Special Area of Conservation (pSAC)

Pwynt Point	Hydred Longitude	Lledred Latitude	X	Y
1	-4.5766	52.9389	226,872.48	341,089.75
2	-4.5812	52.9332	226,538.36	340,469.02
3	-4.5812	52.9332	226,541.86	340,463.62
4	-4.5905	52.9287	225,895.90	339,991.20
5	-4.5909	52.9284	225,870.10	339,952.00
6	-4.6646	52.8896	220,756.08	335,820.75
7	-4.6646	52.8896	220,754.29	335,821.37
8	-4.6715	52.8774	220,241.60	334,482.70
9	-4.6716	52.8773	220,233.50	334,476.50
10	-4.7499	52.8134	214,696.20	327,567.30
11	-4.7500	52.8133	214,685.60	327,548.40
12	-4.5689	52.8151	226,894.80	327,304.20
13	-4.5681	52.8149	226,951.20	327,277.90
14	-4.5595	52.8111	227,512.80	326,832.40
15	-4.5592	52.8110	227,534.00	326,822.90
16	-4.5418	52.8013	228,670.50	325,703.80
17	-4.5406	52.8011	228,746.10	325,673.10
18	-4.5298	52.7773	229,386.20	323,004.60
19	-4.1278	52.6063	255,932.17	303,113.95
20	-4.1264	52.6060	256,023.12	303,077.42
21	-4.1261	52.6057	256,044.32	303,039.72
22	-4.0742	52.5376	259,340.30	295,367.30
23	-4.0719	52.5286	259,464.49	294,366.23
24	-4.0646	52.5287	259,962.23	294,356.76
25	-4.0619	52.5276	260,143.50	294,229.40
26	-4.0893	52.4068	257,893.60	280,847.90
27	-4.0908	52.4066	257,792.90	280,826.50
28	-4.1603	52.3077	252,736.97	269,966.66
29	-4.1612	52.3074	252,672.37	269,946.06
30	-4.2302	52.2544	247,786.12	264,188.93
31	-4.2303	52.2543	247,781.52	264,179.90
32	-4.2644	52.2438	245,417.47	263,085.74
33	-4.2648	52.2435	245,390.66	263,052.65
34	-4.3058	52.2218	242,517.69	260,728.50
35	-4.3058	52.2218	242,512.09	260,723.00
36	-4.3358	52.2150	240,441.20	260,038.10
37	-4.3360	52.2149	240,428.20	260,026.30
38	-4.4966	52.1443	229,185.43	252,545.79
39	-4.4968	52.1442	229,172.95	252,532.18
40	-4.6866	52.1141	216,064.00	249,643.50
41	-4.6908	52.1120	215,773.30	249,420.30
42	-4.7583	52.0774	211,002.50	245,754.00
43	-4.7583	52.0774	211,003.00	245,750.00
44	-4.7586	52.0773	210,981.60	245,738.50
45	-4.7586	52.0773	210,979.70	245,738.30
46	-4.8491	52.0228	204,543.01	239,926.83
47	-4.8501	52.0226	204,476.00	239,896.50
48	-4.8676	52.0195	203,263.20	239,604.10
49	-4.8677	52.0195	203,257.73	239,603.65
50	-4.8774	52.0192	202,586.54	239,596.88

Pwynt Point	Hydred Longitude	Lledred Latitude	X	Y
51	-4.8777	52.0192	202,569.25	239,596.69
52	-4.9696	51.9969	196,161.71	237,377.91
53	-4.9698	51.9969	196,150.11	237,374.01
54	-4.9703	51.9966	196,115.31	237,339.41
55	-4.9706	51.9965	196,093.71	237,326.86
56	-5.1815	51.9487	181,386.60	232,626.40
57	-5.1817	51.9486	181,372.80	232,621.00
58	-5.2800	51.8675	174,216.03	223,903.35
59	-5.2798	51.8675	174,229.20	223,904.07
60	-5.2177	51.8723	178,522.60	224,246.50
61	-5.2176	51.8723	178,531.20	224,244.70
62	-5.1961	51.8688	179,992.70	223,790.60
63	-5.1958	51.8690	180,017.50	223,810.03
64	-5.1165	51.7101	184,719.78	205,908.67
65	-5.1131	51.6917	184,864.85	203,852.45
66	-5.0618	51.6237	188,088.96	196,150.89
A	-5.1256	51.4843	183,015.83	180,831.97
B	-5.4188	51.5085	162,788.61	184,437.56
C	-5.5951	51.6760	151,479.12	203,636.76
D	-5.6292	51.8538	150,107.83	223,519.02
E	-5.2723	52.2853	176,837.04	270,324.71
F	-5.3059	52.4632	175,454.76	290,211.76
G	-4.7284	52.9533	216,738.25	343,061.75
H	-4.5808	52.9628	226,685.78	343,757.97

Dangosir y pwyntiau wedi'u rhifo yn y mapiau mewnol canlynol ar y prif fap ar dudalen 1.

The numbered points in the following inset maps are shown on the main map on page 1.

-  Ardal Cadwraeth Arbennig dan ystyriaeth (AGAy) possible Special Area of Conservation (pSAC)
-  Ardaloedd Cadwraeth Arbennig Eraill (ACA) Other Special Areas of Conservation (SAC)

Ac eithrio pan nodir yn wahanol, mae ffin yr ACA bosibl yn dilyn y Marc Distyll Cymedrig rhwng y pwyntiau canlynol:

1 a 2	35 a 36
3 a 4	37 a 38
5 a 6	39 a 40
7 a 8	41 a 42
9 a 10	43 a 44
11 a 12	45 a 46
13 a 14	47 a 48
15 a 16	49 a 50
17 a 18	51 a 52
19 a 20	53 a 54
21 a 22	55 a 56
23 a 24	57 a 58
25 a 26	59 a 60
27 a 28	61 a 62
29 a 30	63 a 64
31 a 32	65 a 66
33 a 34	

Except where otherwise shown, the boundary of the possible SAC follows Mean Low Water Mark between the following points:

1 and 2	35 and 36
3 and 4	37 and 38
5 and 6	39 and 40
7 and 8	41 and 42
9 and 10	43 and 44
11 and 12	45 and 46
13 and 14	47 and 48
15 and 16	49 and 50
17 and 18	51 and 52
19 and 20	53 and 54
21 and 22	55 and 56
23 and 24	57 and 58
25 and 26	59 and 60
27 and 28	61 and 62
29 and 30	63 and 64
31 and 32	65 and 66
33 and 34	

