

Coedwig Clocaenog Forest

Croeso i Goedwig Clocaenog

Croeso i'r goedwig enfawr hon sydd yr un maint â 10,000 o gaeau rygbi (100 cilometr sgwâr). Mae wedi'i lleoli ym mhen deheuol gweunydd Hiraethog, a chafodd ei phlannu yn y 1930au. Er ei bod yn goedwig weithredol, mae hi bellach yn gartref i amrywiaeth eang o fywyd gwyllt, yn ogystal â bod yn lle y gall pobl ei fwynhau.

Wyddech chi fod gan Clocaenog fwy o wiwerod coch nag unrhyw goedwig arall yng Nghymru? Ond rhaid ichi fod yn lwcus iawn i weld un, oherwydd maent ar wasgar dros ardal eang ac yn greaduriaid eithaf swil.

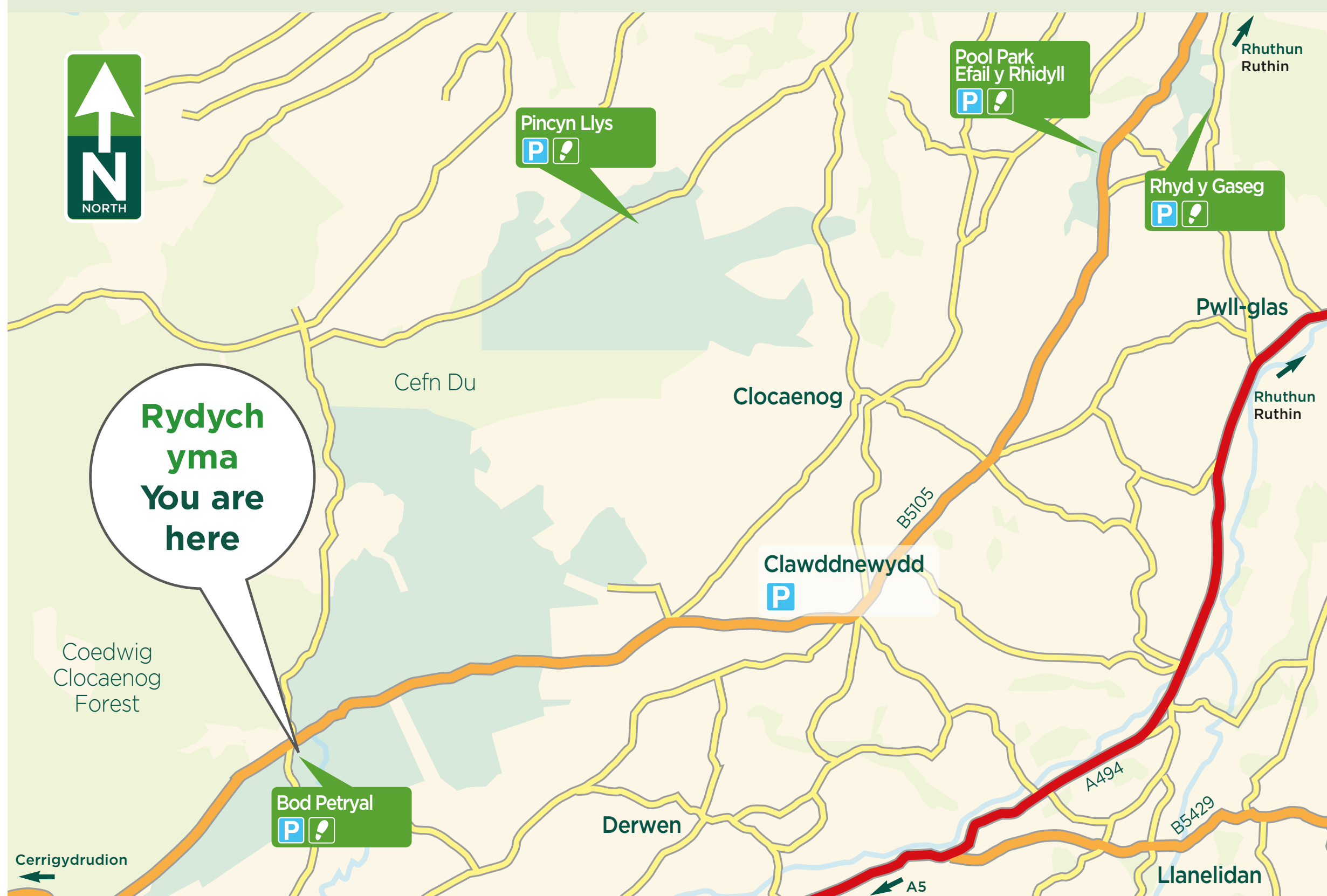
Mae grugieir duon prin, sy'n enwog am eu campau carwriaethol, yn byw ar gyrion y goedwig. Mae gweithio'n agos gyda'r RSPB wedi arwain at gynydd o 88% yn nifer yr adar.

Welcome to Clocaenog Forest

Welcome to this huge forest which is the size of 10,000 rugby pitches (100km²). It lies at the southern end of Hiraethog Moor and was first planted in the 1930s. Although still a working forest, it is now a home for a wide variety of wildlife, as well as for people to enjoy.

Did you know that Clocaenog has more red squirrels than any forest in Wales? You will be very lucky to see one as they range over large areas and are quite secretive.

Rare black grouse, known for their flamboyant courtship display, known as a 'lek', live on the forest edge. Working closely with the RSPB has led to an 88% increase in bird numbers.



Croeso i Fod Petryal

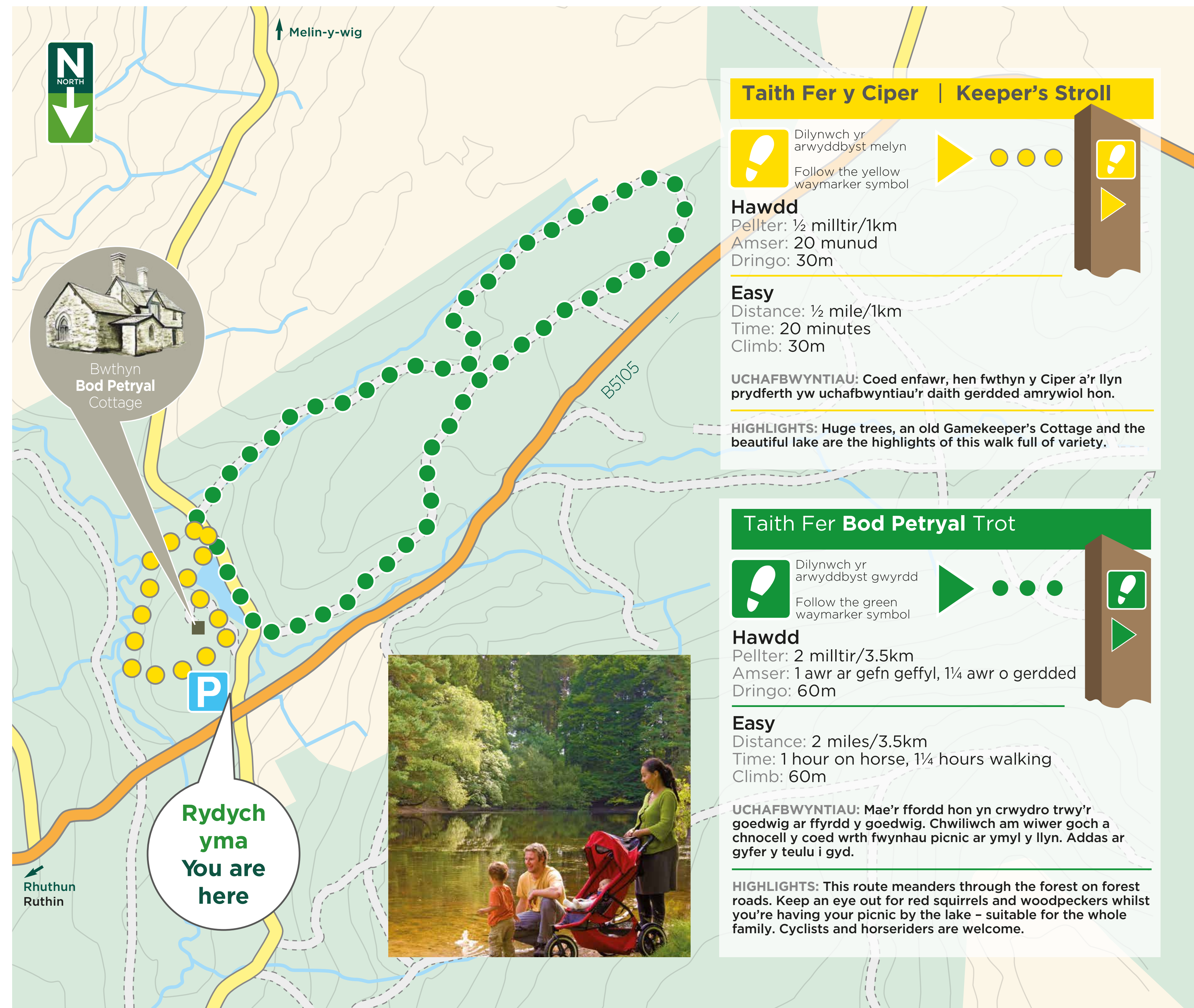
Croeso i Fod Petryal, man cychwyn gwych i fynd am dro o amgylch Coedwig Clocaenog.

Gerllaw ceir hen fwthyn y Ciper – Bod Petryal, sydd, yn llythrennol, yn golygu annedd siâp petryal. Mae'r bwthyn yn ein hatgoffa fod yr ardal hon, ar un adeg, yn rhan o Ystâd Pool Park y teulu Bagot. Yn y fan hon ceir y coed hynaf yng Nghoedwig Clocaenog.

Welcome to Bod Petryal

Welcome to Bod Petryal, a great starting place for a stroll around Clocaenog Forest.

Nearby is the old Gamekeeper's cottage – Bod Petryal, literally 'rectangular dwelling', which gives the area its name. The cottage is a reminder that this area was once part of the Bagot family's Pool Park Estate and you can find the oldest trees in Clocaenog Forest here.



Taith Fer y Ciper | Keeper's Stroll

Hawdd
Dilynwch yr arwyddbyst melyn
Follow the yellow waymarker symbol

Pellter: ½ milltir/1km
Amser: 20 munud
Dringo: 30m

Easy
Distance: ½ mile/1km
Time: 20 minutes
Climb: 30m

UCHAFBWYNTIAU: Coed enfawr, hen fwthyn y Ciper a'r llyn prydfarth yw uchafbwyntiau'r daith gerdded amrywiol hon.

HIGHLIGHTS: Huge trees, an old Gamekeeper's Cottage and the beautiful lake are the highlights of this walk full of variety.

Taith Fer Bod Petryal Trot

Hawdd
Dilynwch yr arwyddbyst gwyrdd
Follow the green waymarker symbol

Pellter: 2 milltir/3.5km
Amser: 1 awr ar gefn geffyl, 1¼ awr o gerdded
Dringo: 60m

Easy
Distance: 2 miles/3.5km
Time: 1 hour on horse, 1¼ hours walking
Climb: 60m

UCHAFBWYNTIAU: Mae'r ffordd hon yn crwydro trwy'r goedwig ar ffordd y goedwig. Chwiliwch am wiwer goch a chnocell y coed wrth fwynhau picnic ar ymyl y llyn. Addas ar gyfer y teulu i gyd.

HIGHLIGHTS: This route meanders through the forest on forest roads. Keep an eye out for red squirrels and woodpeckers whilst you're having your picnic by the lake – suitable for the whole family. Cyclists and horseriders are welcome.