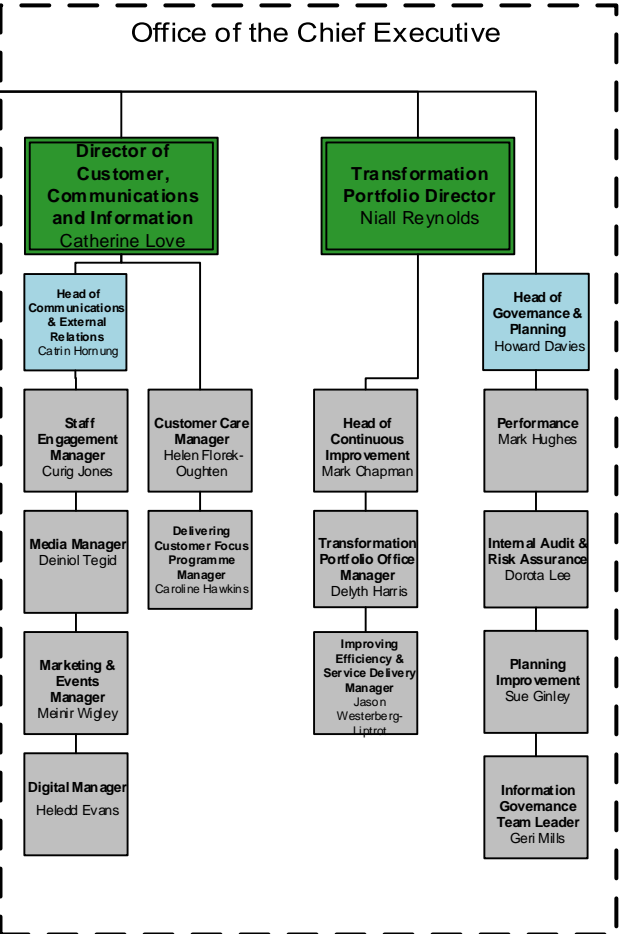
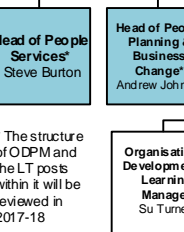


Natural Resources Wales Executive, Leadership and Management Tiers

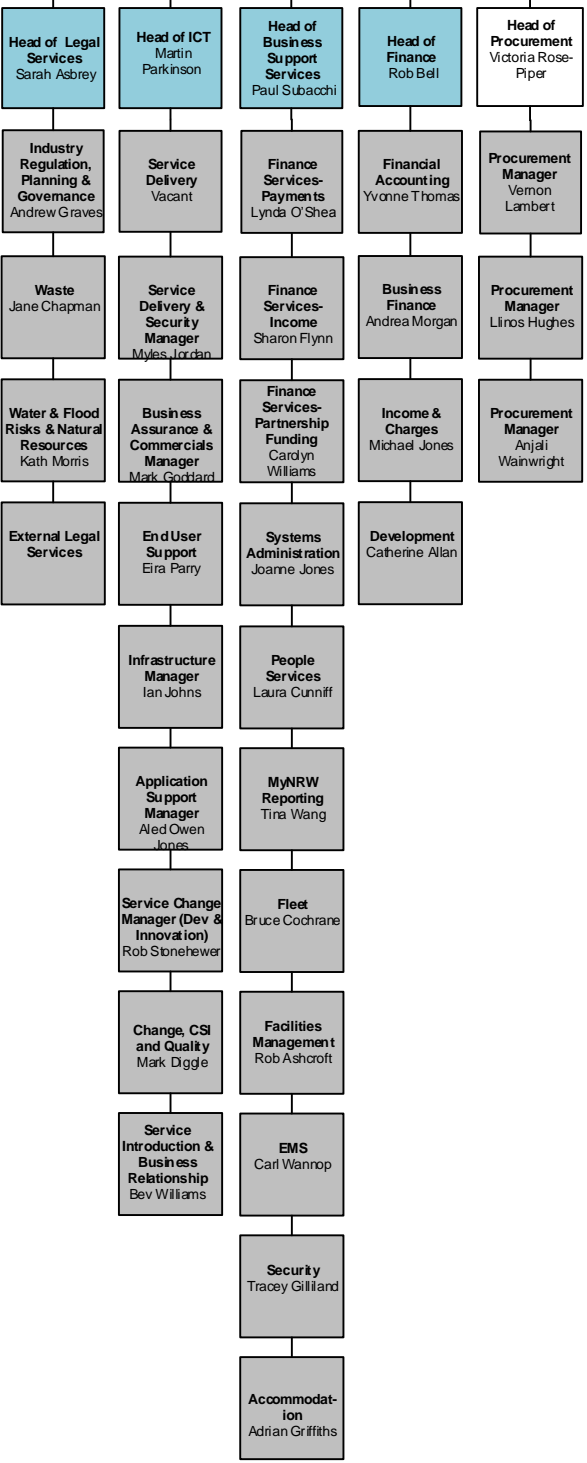
Chief Executive
Clare Pillman



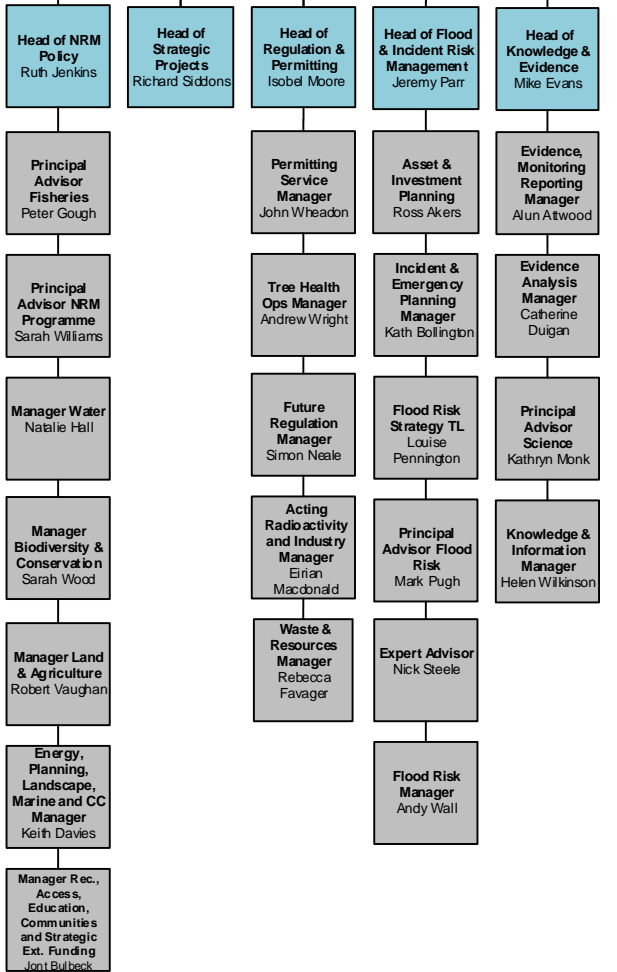
Executive Director of ODPM
Ashleigh Dunn



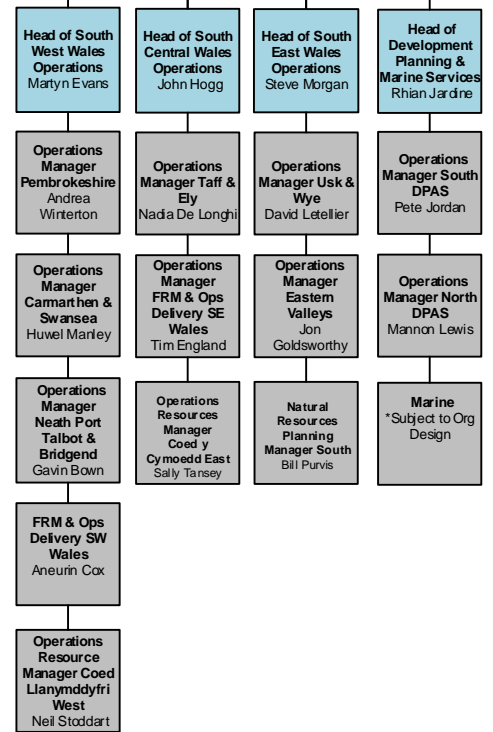
Executive Director of Finance and Corporate Services
Kevin Ingram



Executive Director of Evidence, Policy & Permitting
Ceri Davies



Executive Director of South Wales Operations
Gareth O'Shea



Executive Director of North and Mid Wales Operations
Tim Jones

